

20.02.2024



RAY NPC

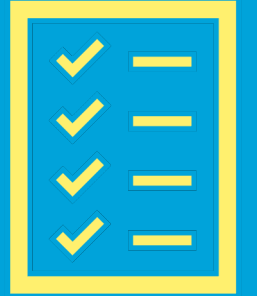
→ NA/SALTO staff meeting on cooperation between
PCs and NPCs



About RAY NPC

This research project aims to explore key aspects of collaboration with neighbouring partner countries in the context of the European youth programmes. RAY NPC Explores:

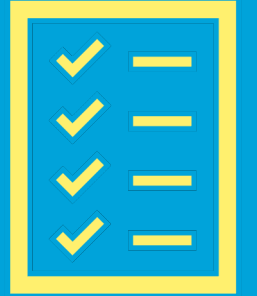
- Effects of projects funded through the European youth programmes on the actors involved
- Profiles of project participants project teams, organisations, networks and groups involved
- Needs of project teams and their organisations, networks and groups in relation to working with in projects with neighbouring partner countries specifically
- Differences, if any, between projects involving organisations, networks and groups in EU Member States and third countries associated to the programmes, on the one hand, and neighbouring partner countries, on the other hand.



Survey dissemination

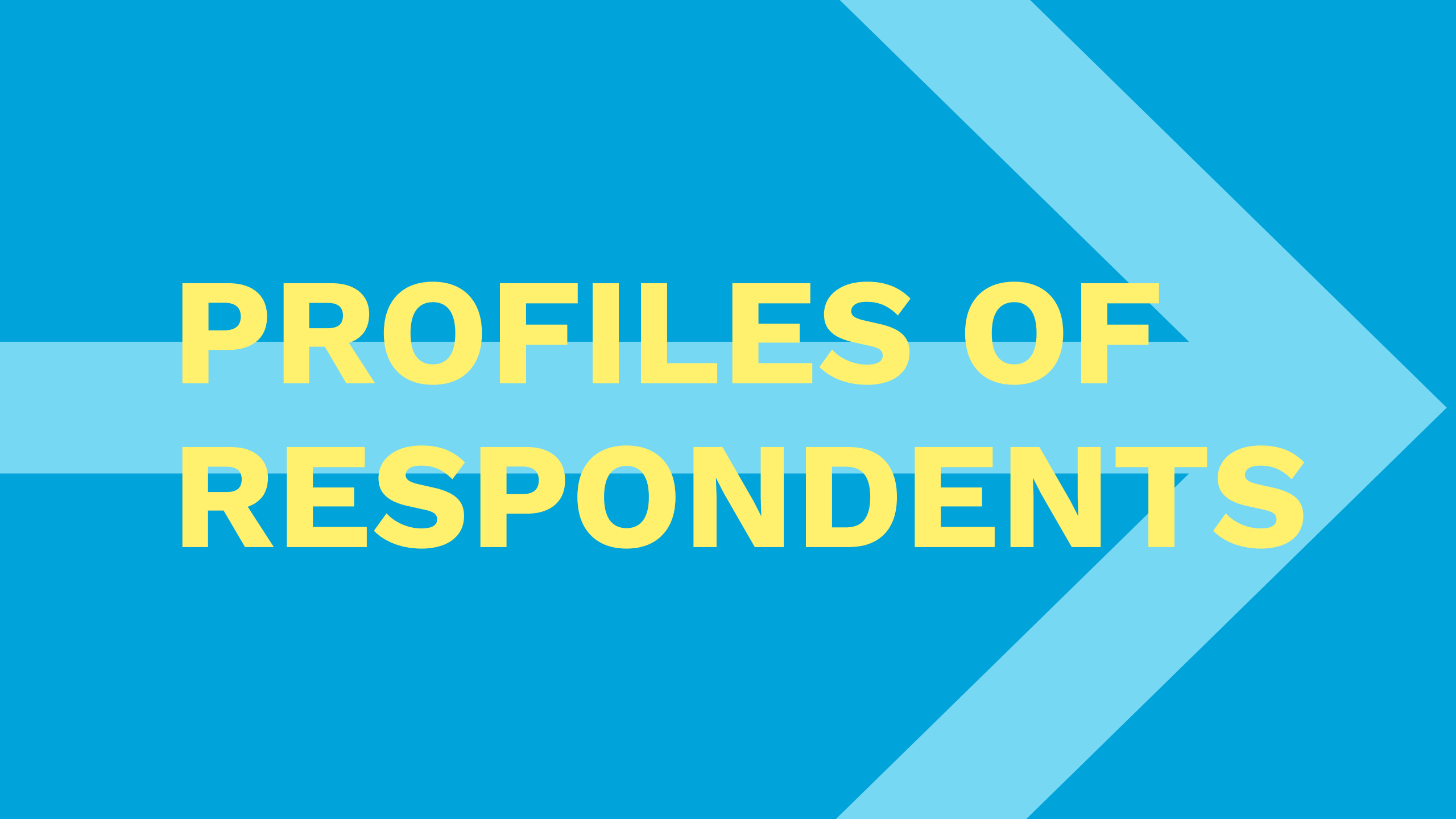
- Survey intended for **organisational contact persons** and **project teams** of projects involving NPCs
- Invitations:
 - RAY Network **invited beneficiaries directly***
 - **Contacted the EACEA** for them to invite respondents from Capacity Building for Youth
 - **Survey was published on RAY website** and all RAY partners disseminated it

* from Mobilities, Youth Participation Projects, Cooperation projects (KA2) and Volunteering projects



Survey responses

- We gathered responses **November 15th to February 6th**
- People clicked on the link about 550 times, of which we obtained **over 200 responses** with valid input



PROFILES OF RESPONDENTS

Who answered our survey?



- 50% exp. with one or two NPC projects
- 70% exp. with four or less NPC projects
- 10% **no** exp. with project *hosted* in NPC
- 30% exp. with **one** project *hosted* in NPC



- 70% from program country
- 20% from neighbouring east
- 75% exp.in Youth Exchange
- 47% exp. in Mobility of Youth Workers
- 30% exp. in Youth Participation Projects
- 25% exp. in International Volunteering

What was their role in the last project?



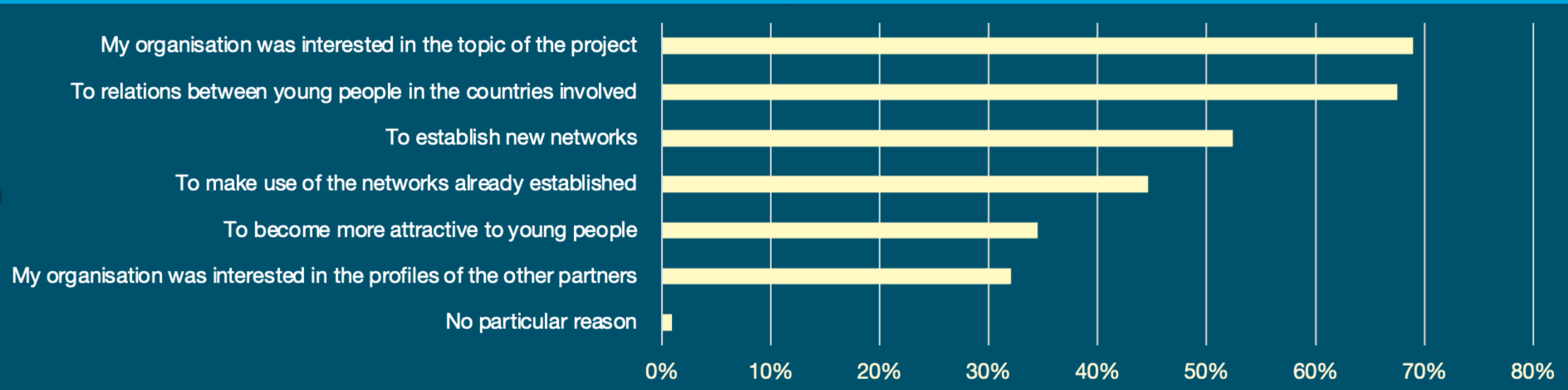
- 45% Implementational role
- 45% implementational/strategic role
- 76% consider their last experience typical




- 30% only sending
- 20% only hosting
- 20% only coordinating
- 10% hosting and coordinating

Organisations joined their last project to bring young people together and network

What was the motivation to become involved in the project?





EFFECTS OF PROJECTS

Respondents were satisfied with their last project



Projects with NPC are a successful networking experience for organisations

87%

of program country organisations

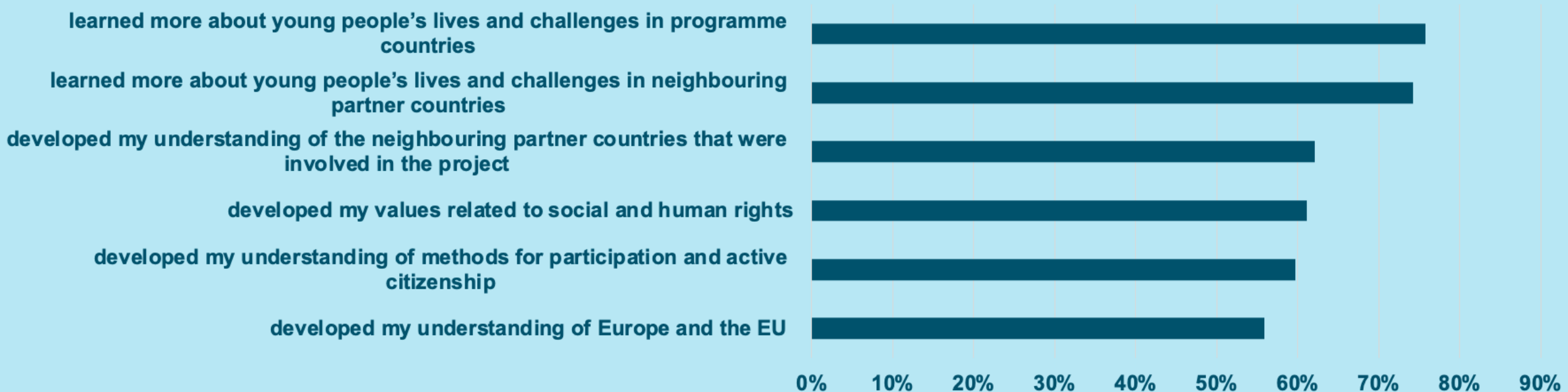
AND

92%

of neighbouring partner country organisations

Say their organisation extended their networks meaningfully towards each other as a result of participating in their last project

Projects with NPC foster mutual understanding among participants





NATURE OF PARTNERSHIPS

92%
Agree

... that the constellation
of PC and NPC brought
an added value

In what ways?

“[participants] learnt about the difficult situations some youth in the Middle east live in and become more sensitive and emphatic, as well as more tolerant and eager to learn more about the way of life in other regions”

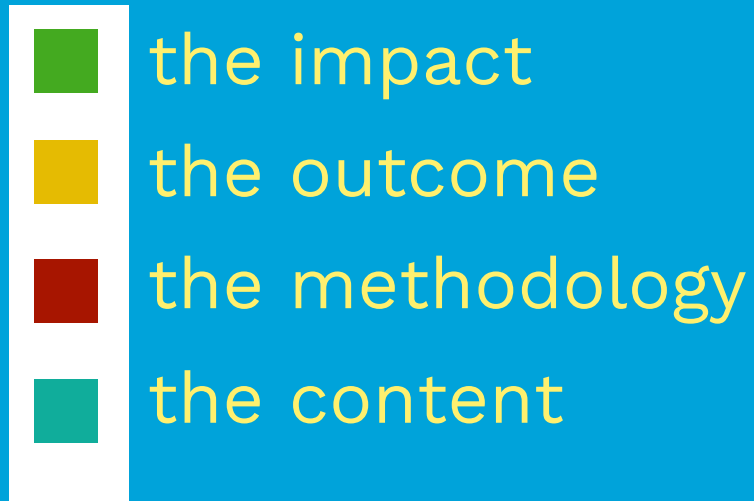
“It helps not to stay in the same European bubble”

“We believe that the impact of these projects on those countries is really important and offer new opportunities to the local youth (from NPC respondent)”

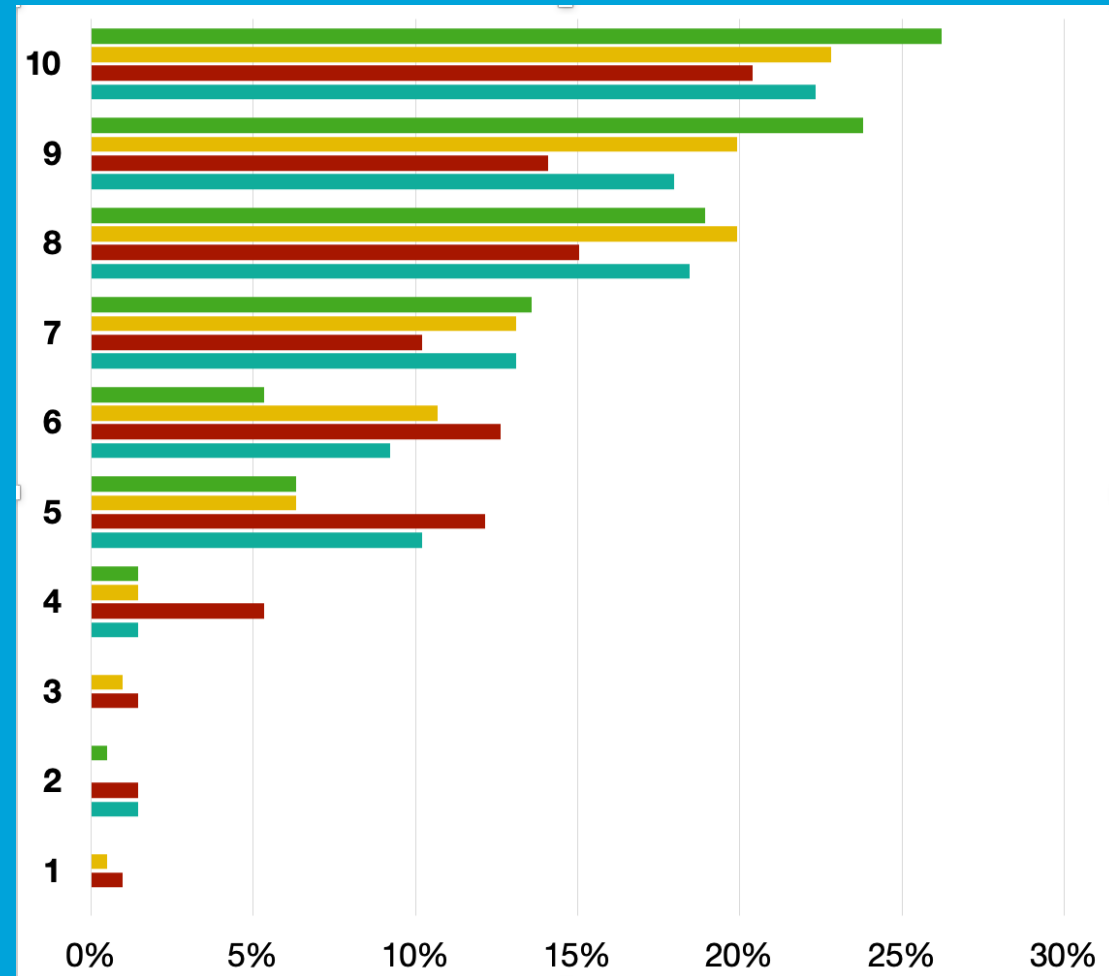
“They have different problems they face and can bring it on the table and benefit others by their experience ”

It adds valuable diversity to the projects

How much did the involvement of NPCs influence...



...of the project?



In what ways?

“The local culture, social conditions, educational methods, perspective on education influenced the partnership and the project.”

“The contents responded to the need of the participants ”

“The impact was significant but mostly negative.”

“Participants from partner countries are always more curious and excited to participate”

by bringing **excitement**, steering the **content**, providing **new working contexts** and making things a bit more **difficult**

A word cloud centered around the word "cooperation". The word "cooperation" is the largest and most prominent, written in a bold, blue, sans-serif font. Surrounding it are various related terms in smaller, blue, sans-serif fonts, including "understanding", "empowering", "strong", "coordination", "communication", "friendship", "trust", "support", "development", "good", "friendly", "cooperative", "diversity", and "learning". The words are arranged in a circular pattern around the central word, with some overlapping.

understanding

empowering

strong

coordination

cooperation

communication

friendship

trust

support

development

good

friendly

cooperative

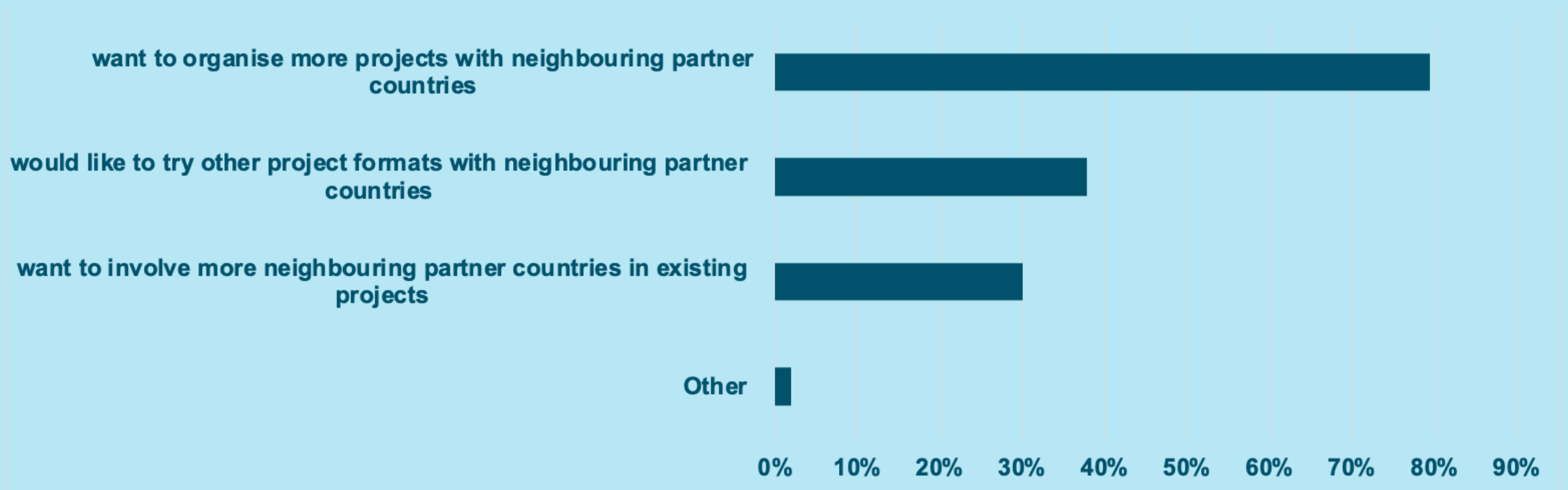
diversity

learning

73%
Agree

... that both PCs and
NPCs benefitted equally
from their last project

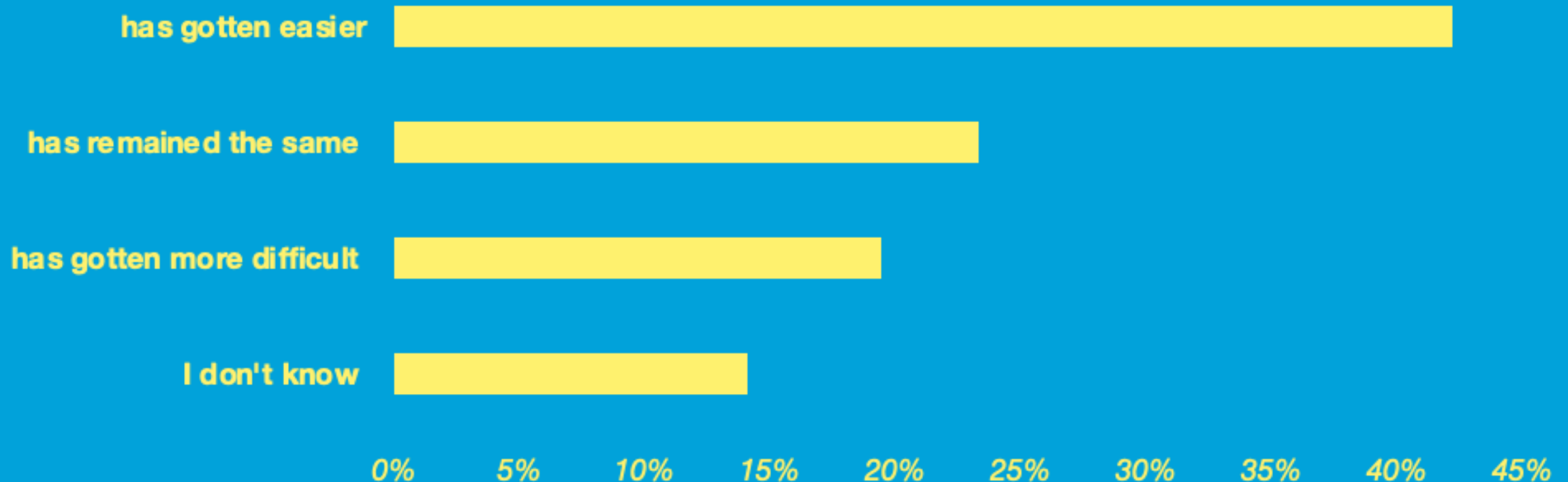
After this project, in my organisation, we...



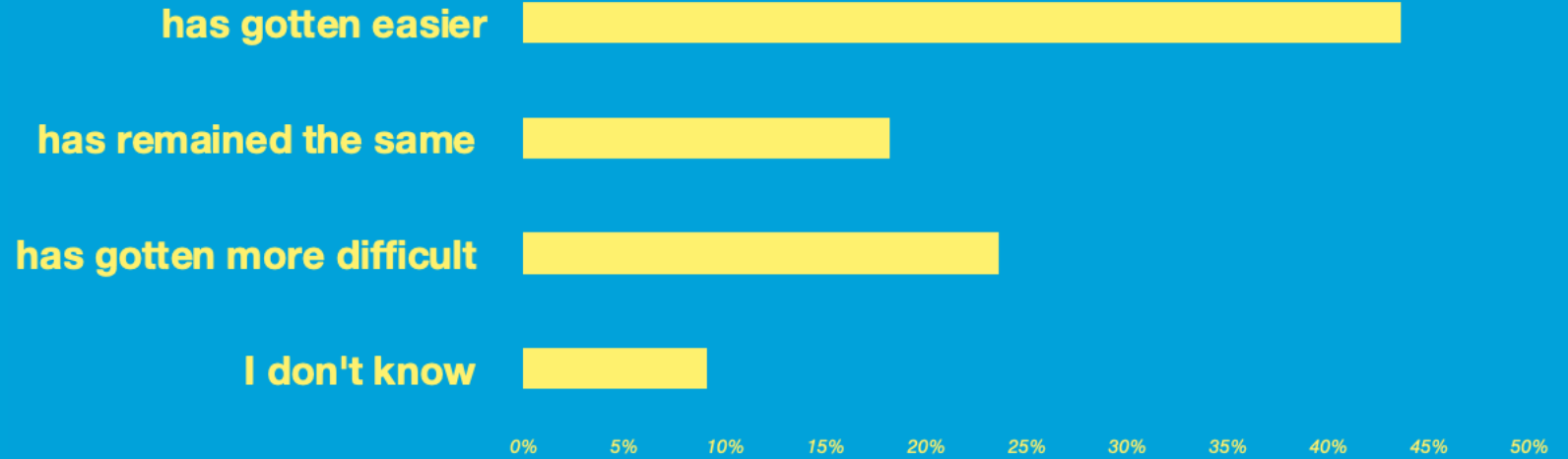


NEEDS OF ORGANISATIONS

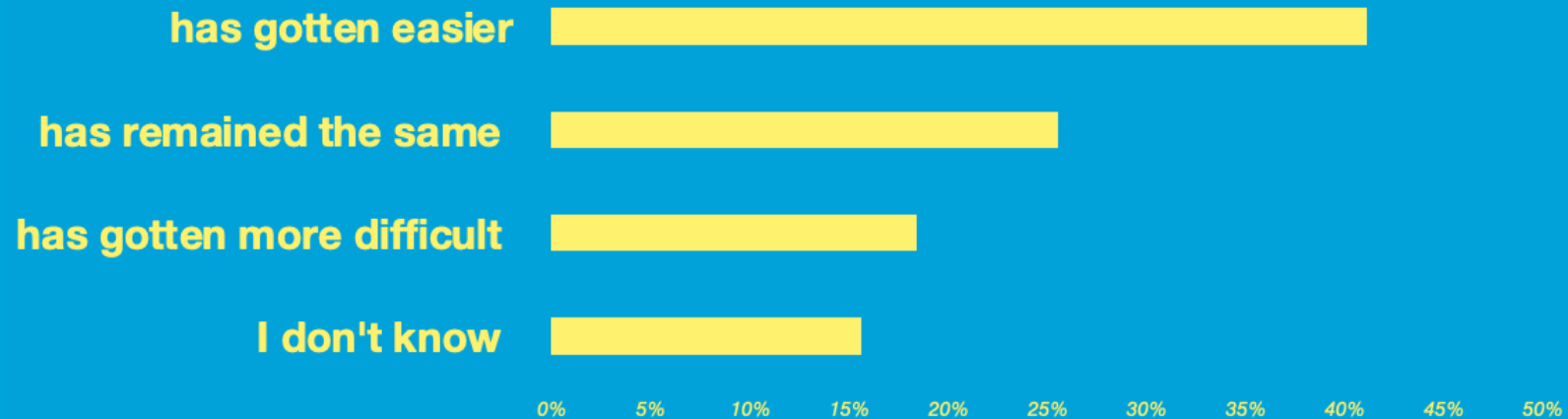
Over time, the development of projects involving Programme and neighbouring partner countries ...



Neighbouring Partner Countries



Programme Countries



Explanations as to why...

It has gotten easier.

“The more you learn, the easier it will get. But also it become more easier with the reporting and so on in BM. But it still have some technical issues that must be solved.”

“The experienced in collaborating and organising similar projects helped to facilitate the implementation and organisation of projects.”

“I gained more experience and take this knowledge into account.”

Explanations as to why...

It has gotten more difficult.

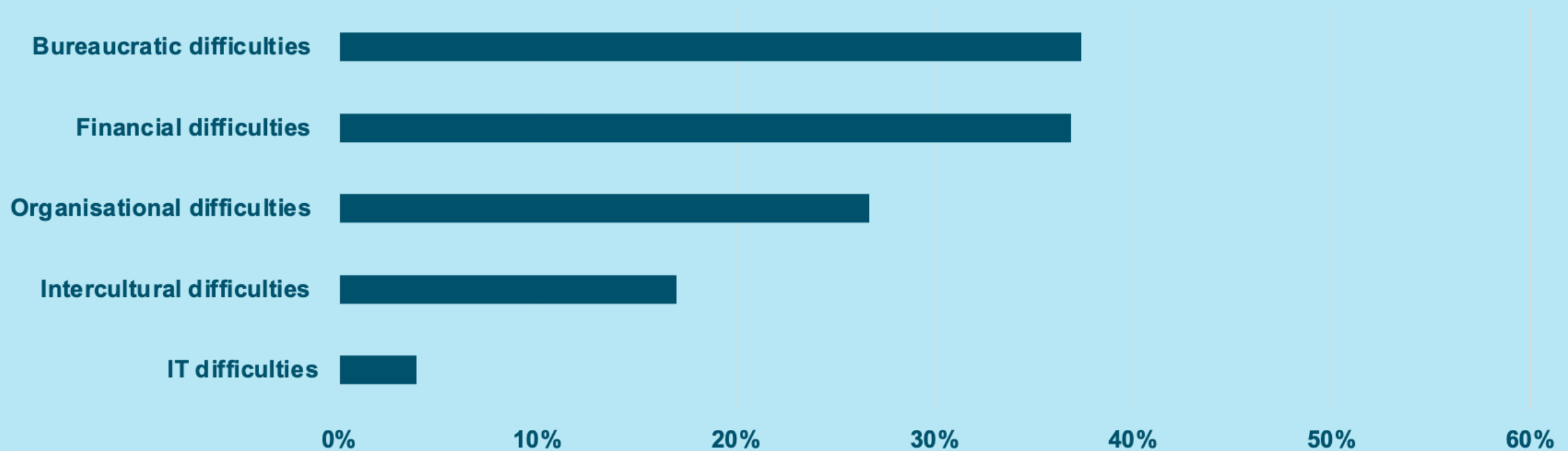
“It's known that the programmes closed almost all the doors for partners countries when it comes to applications and coordination. We are put into the inferior position since we need to have reliable partners . . . Capacity building in the field of youth is open for everyone, so the competition is extreme . . .”

“Last years less priority has been given to projects involving neighbouring countries by some of the national agencies and 25% rule (ratio EU/non-EU) has been implemented more strictly unfortunately.”

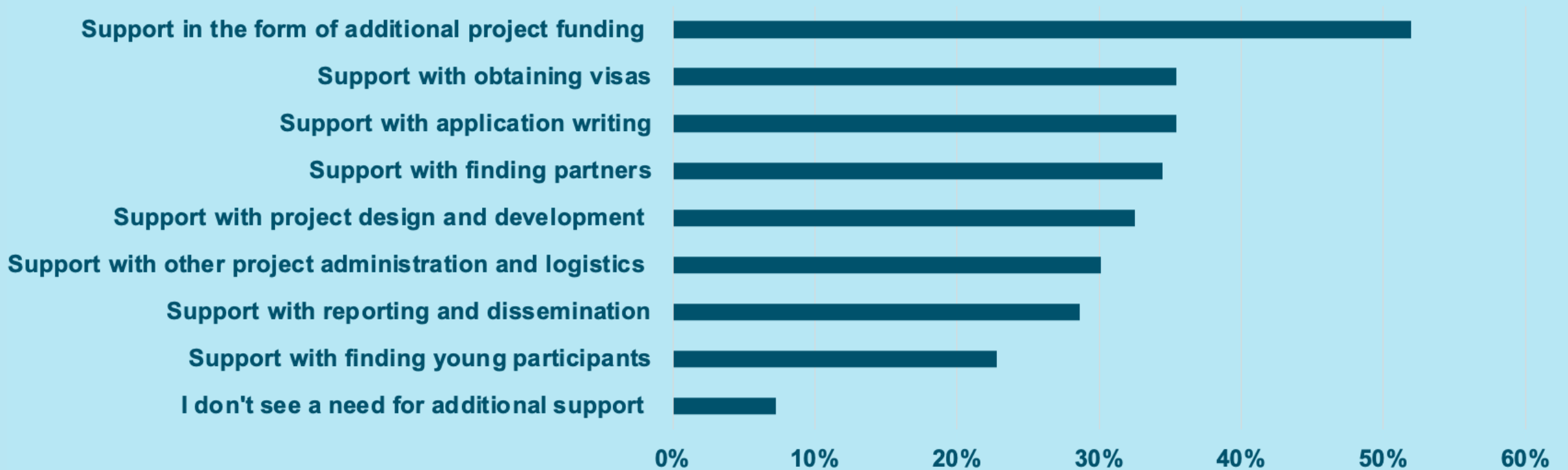
87%

of respondents experienced some difficulties during the implementation of their last project

Needs of organisations



Support needed in the future



A large, light blue arrow points from the left towards the right, set against a solid blue background. The word "CONCLUSION" is written in a bold, yellow, sans-serif font across the center of the arrow.

CONCLUSION

Main findings

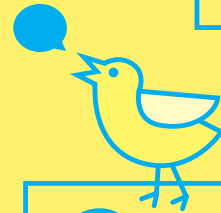
- **Involving NPCs in a project makes a difference**
 - In terms of the outcome, the methodology, the content and the impact
- **Projects successfully bring actors involved closer together**
 - NPC partners bring in an invaluable diversity at personal and organisational level
 - NPC partners bring in excitement, provide new working contexts and can steer the topic of the project
 - Projects are valuable networking opportunities and this motivates organisations to join
- **Overall partners are satisfied with each other and with the benefits of partaking in the projects, even when partnership dynamics become a bit difficult.**
- **Most partners experience bureaucratic and/or financial difficulties.**
 - Partners would like support with obtaining visas as well as writing applications. They would also like additional project funding.



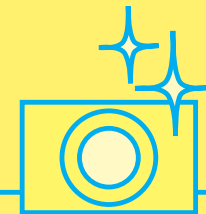
 Research-based
analysis of European
youth programmes

Thank you!

**Join
the
network!**



@ RESEARCHYOUTH



RESEARCHYOUTH